

**Woodlot/Private  
Landowner Perspective  
on  
Social License**

by Rainer Muentert

In close proximity to rural Communities



# The Story:

- **2011:** The process to certify the Woodlot 408 begins
- **2012:** FSC certifications required public involvement, “Open house” meetings
  - Open House is well attended, many of the questions are about Community Forest
- **2012:** Woodlot owners get invited to the local Community Forest Initiative
- **2013-2014:** Field trips by the Community Forest Initiative follow
- **2014:** Woodlot owners get invited to Watershed Restoration Initiative as representatives of private land owner
- **2015:** Invitation to join Salmo River Streamkeepers

# **Social License: the Acceptance and Approval by the Local Community**

Acceptance and Approval are expressed as:

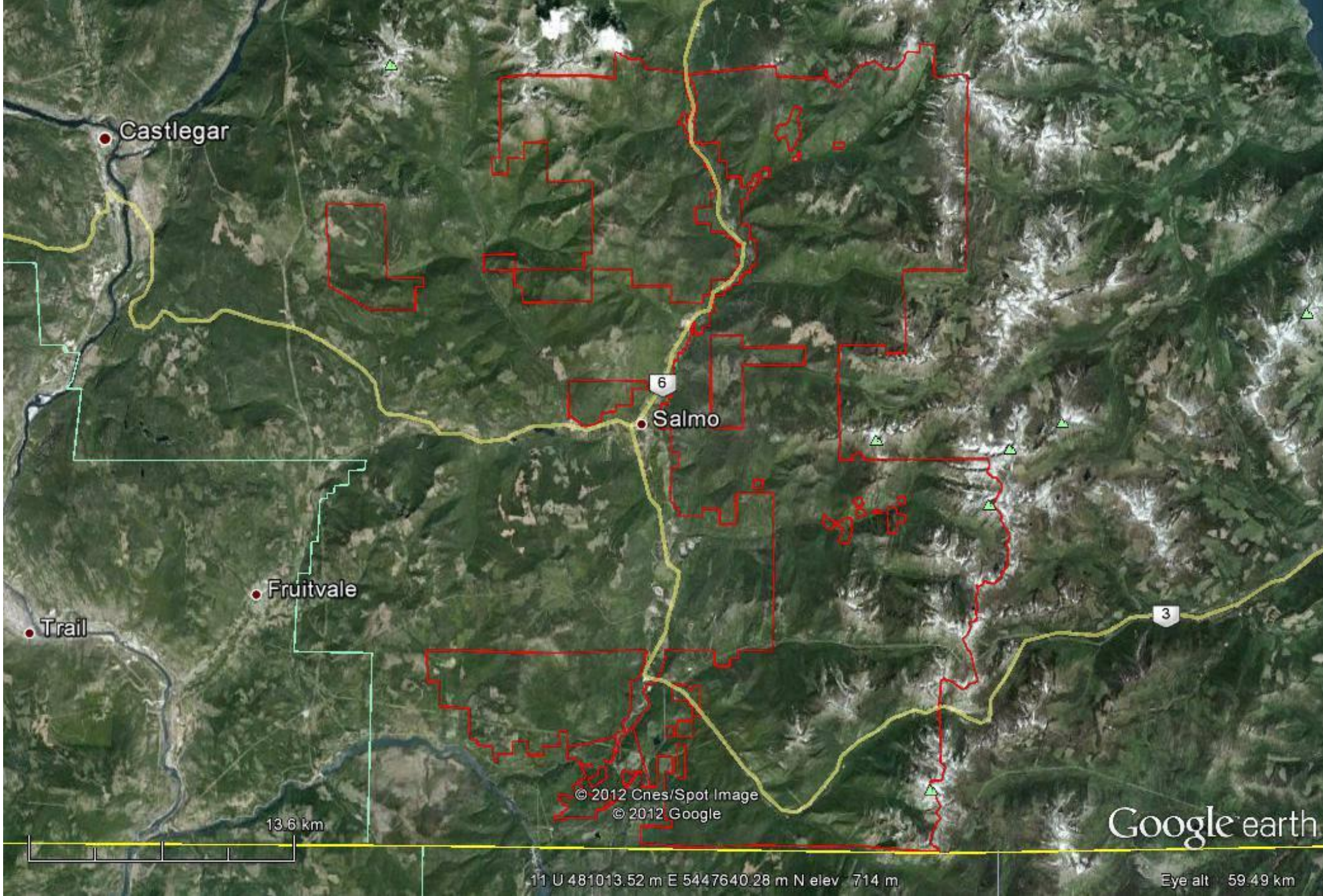
**Curiosity**

**Engagement**

**Assent**

Who is the local Community ?





Castlegar

Salmo

Fruitvale

Trail

© 2012 Cnes/Spot Image  
© 2012 Google

Google earth



11 U 481013.52 m E 5447640.28 m N elev 714 m

Eye alt 59.49 km

# Local Community

Old Timers
Resource Workers
Amenity Migrants
Business Community
Local Government
Government Employees



# Attitudes Towards the BC Woodlot License

Old Timers	sceptical
Resource Workers	positive
Amenity Migrants	sceptical
Buisness community	sceptical
Local Government	sceptical
Government employees	neutral

# Attitudes Towards the FSC Certification

Old Timers	sceptical
Resource Workers	neutral
Amenity Migrants	positive
Buisness community	positive
Local Government	sceptical
Government employees	neutral



# Attitudes Towards Private Land Ownership

Old Timers	negative
Resource Workers	neutral
Amenity Migrants	sceptical
Buisness community	negative
Local Government	sceptical
Government employees	negative



# Summary

	Woodlot	FSC	Private land	Overall
<b>Old Timers</b>	sceptical	neutral	negative	sceptical
<b>Resource Workers</b>	positive	neutral	neutral	neutral
<b>Amenity Migrants</b>	negative	positive	sceptical	neutral
<b>Business community</b>	sceptical	positive	negative	neutral
<b>Local Government</b>	sceptical	sceptical	sceptical	sceptical
<b>Government employees</b>	neutral	neutral	negative	negative



# Questions and Discussion ??

Rainer Muentner, RPF  
Monticola Forest Ltd  
[www.monticola.ca](http://www.monticola.ca)

